



**Automated PC connected  
CD/DVD DUAL Printer Autoloader**

---

**User Manual**



# Table Of Contents

Getting Started .....	1
Alignment .....	2
Setup .....	5
Operation .....	9
To use the application .....	10
Going from 2 printers to 1 .....	10
Running Setup from the Application .....	10
Uninstall .....	10

## **Getting started**

Carefully remove your system from its shipping box and verify that all parts are present. If there are missing or damaged parts contact *All Pro Solutions* or an authorized distributor immediately to correct any miss-packed or missing parts.

You should find the following packaged with your system:

- Autoloader
- Serial Cable
- Power Cable
- Printers x 2
- Printer Plate (mounted on the bottom of your printer) x 2
- Printer Control Cable x 2
- USB Cable x 2
- This User Manual
- 5/64 Ball Point L-Key
- Warranty card

**NOTE:**

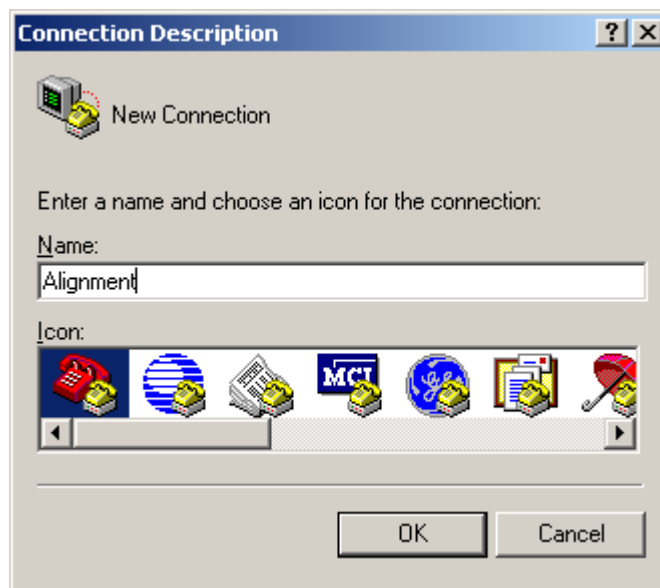
*If your system is damaged during shipment, please contact the freight carrier first, and then contact your distributor or All Pro Solutions.*

**NOTE:**

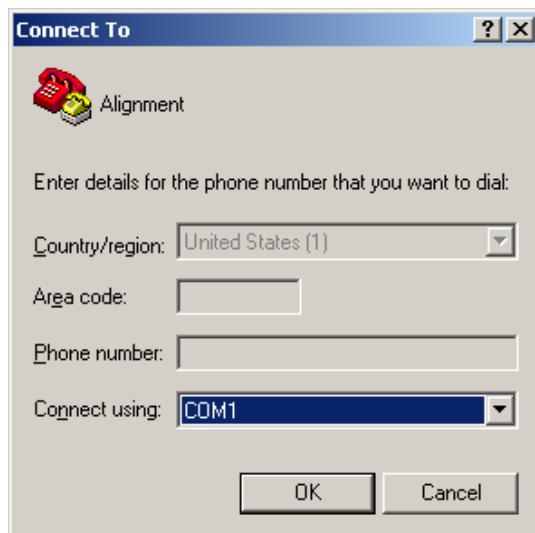
*You should save your shipping materials so that if the need arises you can return your system for service. This packaging was designed specifically for shipping your system. Other packaging may not be as suitable*

## **Alignment**

1. Place bottom printer (# 1) on Autoloader
2. Connect only the power cable to the printer
3. Open the lid and wait for print head to finish movement
4. Lift the latch on the ink cartridge carriage and install new ink cartridges (make sure you pulled the tape off the ink cartridges)
5. Shut the lid of the printer
6. Repeat steps 1-5 for top printer (# 2)
7. Plug in the power to your Autoloader
8. Make sure your Autoloader & PC are turned off
9. Plug in the serial cable between your Autoloaders Serial port (see Fig.1 for H printers; Fig.2 for Z6 printers and Fig.3 for Lex printers)) and your PC
10. Turn on your PC and open HyperTerminal (**Click Start->All Programs->Accessories->Communications->HyperTerminal**)
11. At the **Connection Description** window type the name **Alignment** and click **OK**

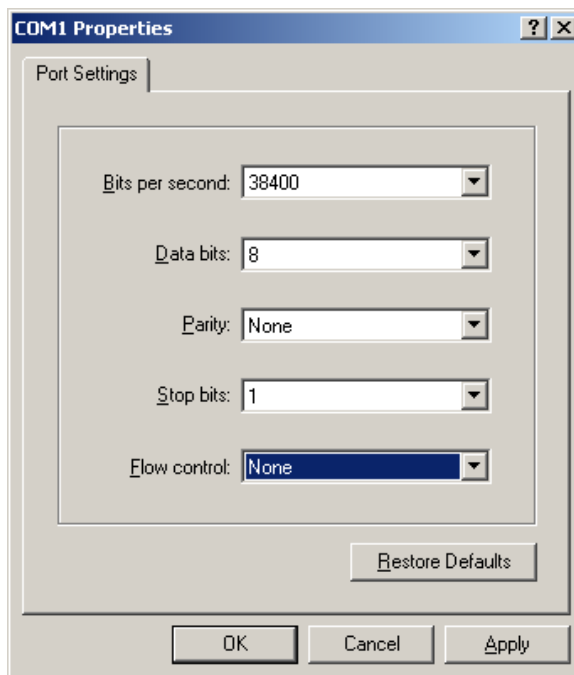


12. At the **Connect To** window make sure it says **COM1** in the **Connect using:** drop down box and click **OK**



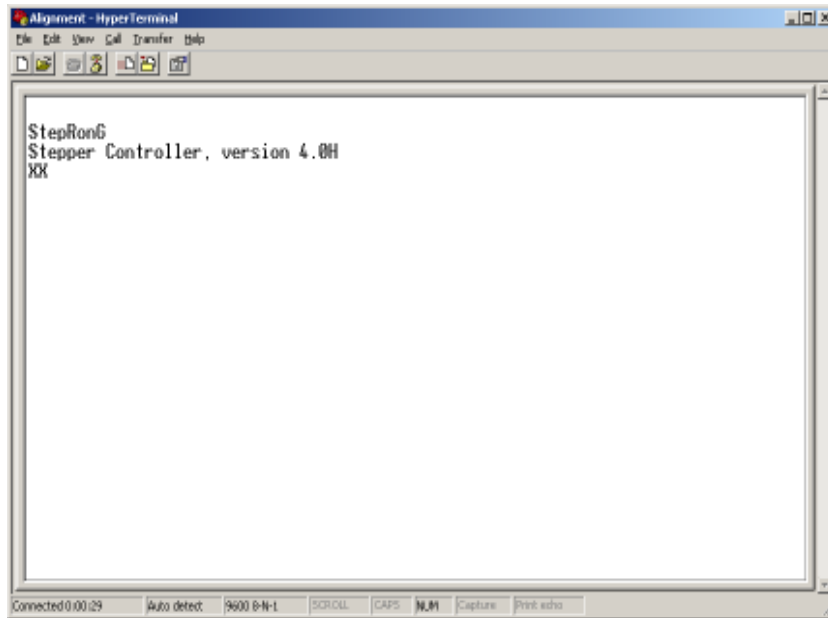
13. At **COM1 Properties** window make sure you have the following properties:

- **Bits per second: 38400**
- **Data bits: 8**
- **Parity: None**
- **Stop bits: 1**
- **Flow control: None**



14. Click **Apply** then **OK**

15. Turn on your Autoloader and you should see the following screen:

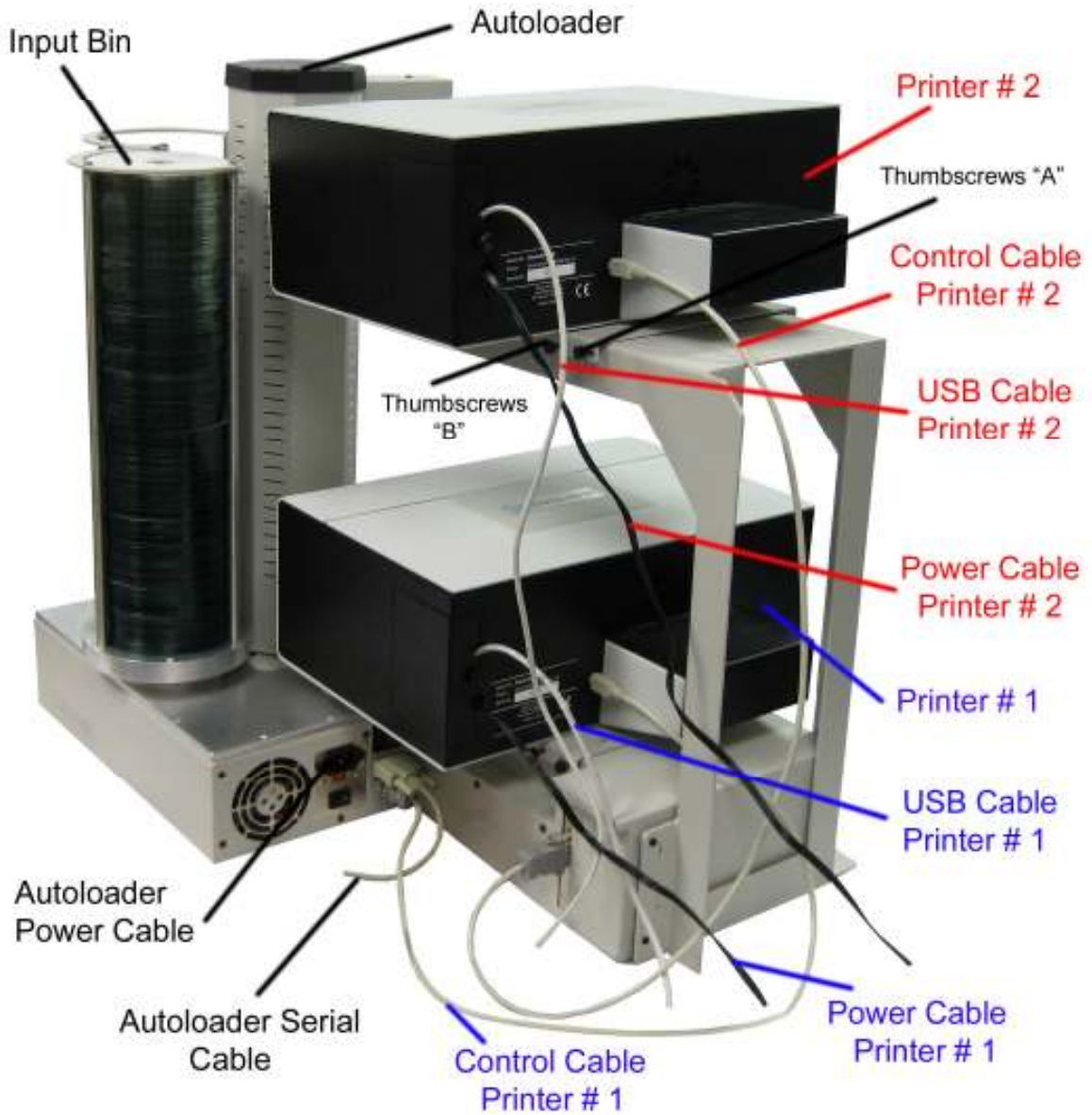


16. Go to **File->Save As** and save the HyperTerminal to the Desktop so you can use it again later if needed.
17. Place media into the first input bin and eject the Top Printer tray
18. Make sure **Caps Lock** is on
19. Use the following keys to align your printer:
  - Press **C** to move the arm back to its home position (known as Home position, also resets the arm from any errors)
  - Press **I** to Insert a disc into the printer, adjust printer as needed and press **I** again until disc aligned is aligned in center of tray
  - Press **A** to Accept alignment and take the disc from the tray to the output rod, make sure the disc is not catching on the trays, otherwise adjust as needed and repeat Insert & Accept commands until aligned
20. Once the top printer (# 2) is aligned, tighten thumbscrews on the printer plate, from the middle out (start with “B” and then “A”), tightening one on the left and right at the same time
21. Run the alignment commands once more to make sure both printers are still aligned after tightening them. **If they are misaligned, it will cause errors.**
22. Close Top Printer (# 2) tray and open Bottom Printer (# 1) tray
23. Repeat same Process for the Bottom Printer (# 1)

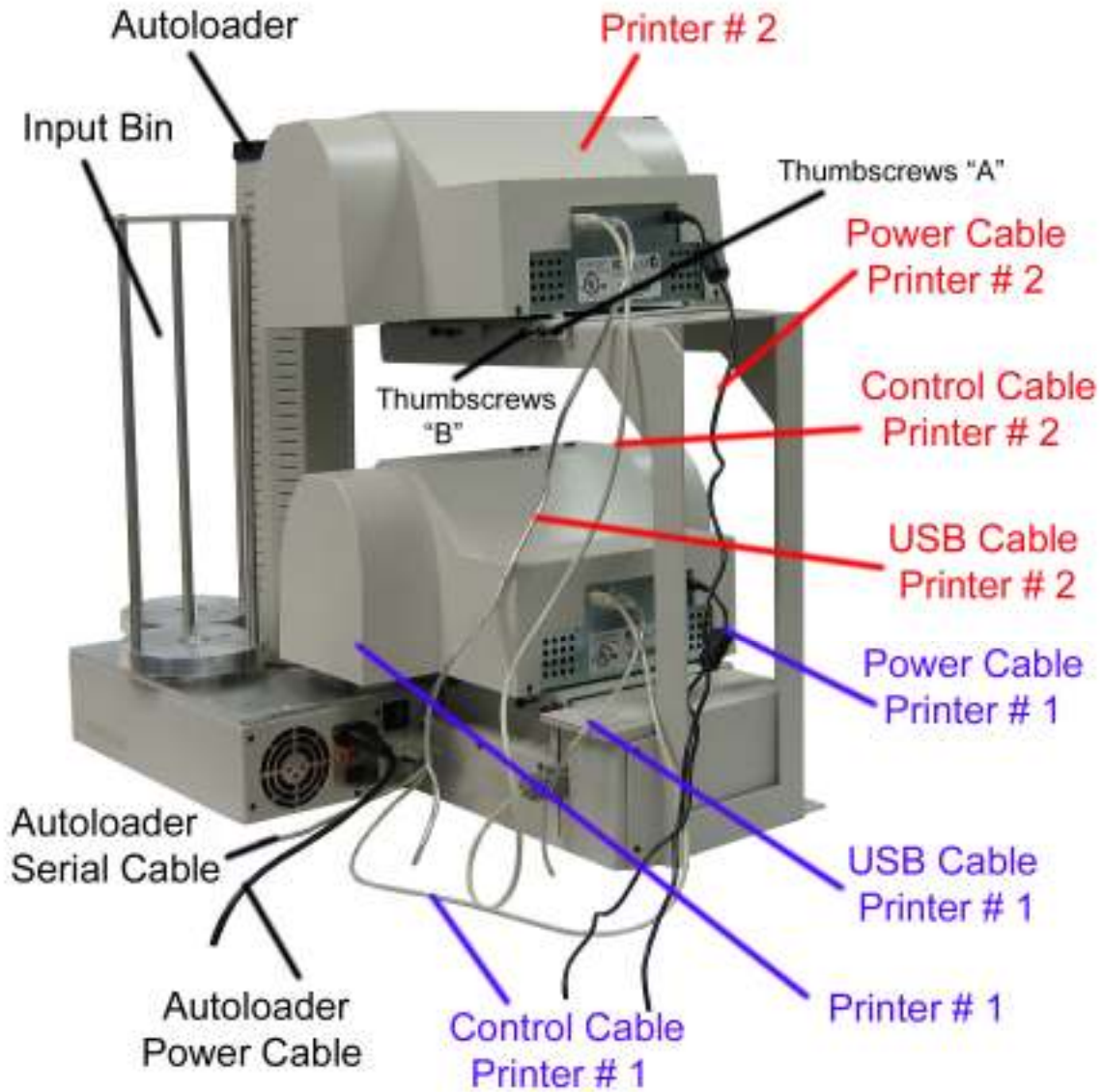
## **Setup**

1. Turn off the PC & Autoloader
2. Plug in Bottom Printer (# 1) control cable from printer to **Autoloader** (see Fig.1 for H printers; Fig.2 for Z6 printers and Fig.3 for Lex printers)
3. Plug USB cable into the printer and computer
4. Plug in Top Printer (# 2) control cable from printer to **Autoloader** (see Fig.1 for H printers; Fig.2 for Z6 printers and Fig.3 for Lex printers)
5. Plug USB cable into printer and computer
6. Make sure the Printer is on then turn on the PC and install the driver for both printers
7. Make sure both printers have solid ready lights and turn on the Autoloader. You should notice both printer trays eject
8. Unzip the software and install it
9. Run the software (**click Start->All Programs->SpeedyPrint->SpeedyPrint**)
10. The first time it is opened, the software will run the setup procedure
11. Make sure only the printers that you will be using are selected in the printer selection box. Press next
12. Place a blank disc into each printer tray and close it. Press the **Test** button; the application will show 2 printers detected, and then click **OK**
13. Click finish; the system will take out both discs and place them in the recessed area.

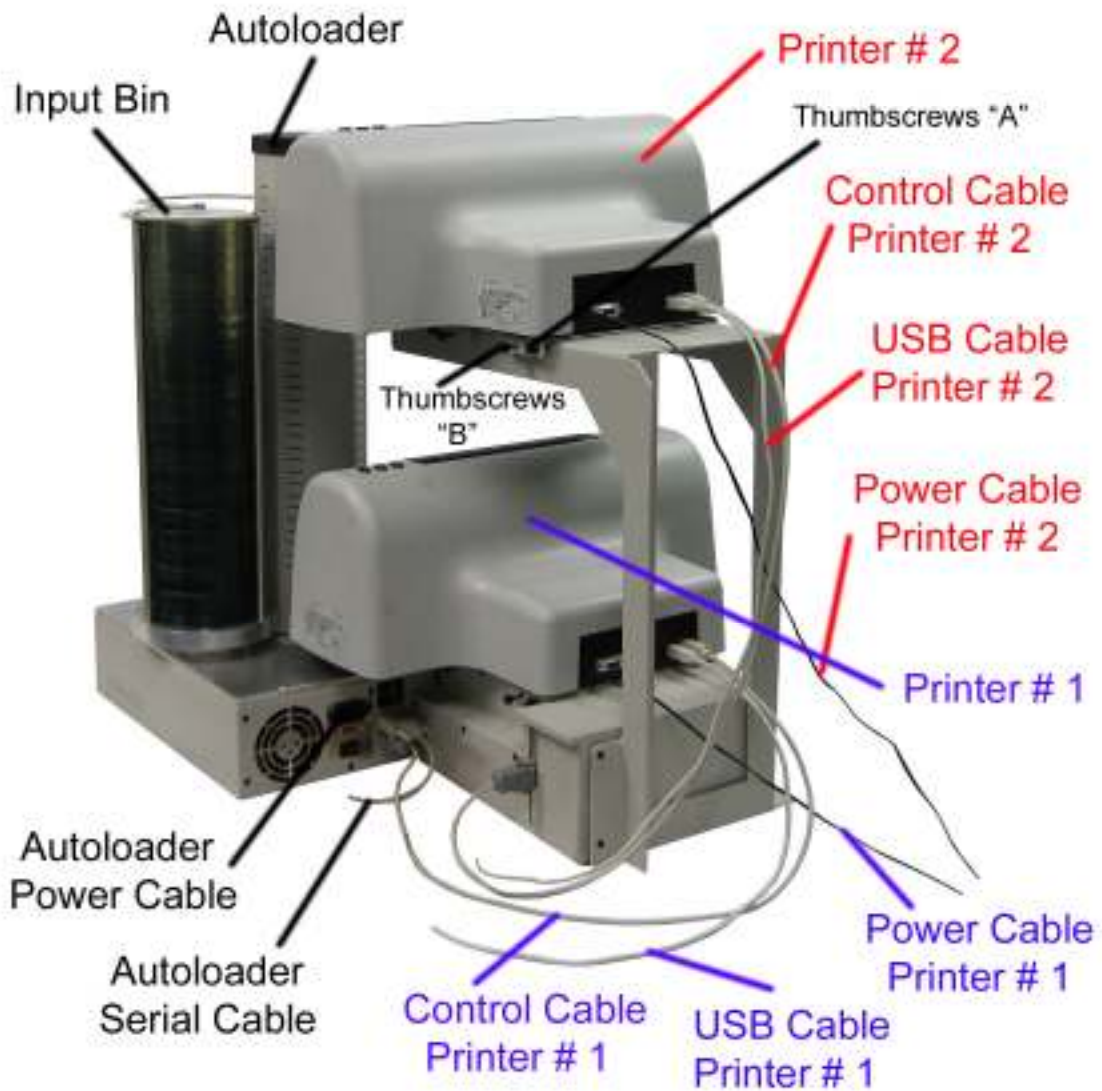
**Fig.1**  
**System with H printers**



**Fig.2**  
**System with Signature Z6 printers**



**Fig.3**  
**System with Lex printers**



## Operation

When turning on the system, please follow this order:

1. Turn on both printers and wait until both have solid ready lights
2. Turn on the Autoloader, both printer trays will eject
3. Turn on your PC



**Label File Box** – this is where you select your PRN file

**Number of Copies** – Number of copies to print

**Start** – Starts your job (while printing, this button will turn to Pause)

**Pause** – Pauses job after current prints have finished (click Start to resume)

**Printers: #** – Located in the bottom right corner – shows how many printers were detected

## **To use the application:**

**Make sure printer trays are closed before starting a job. Starting a job with the trays open may cause an error.**

Select your PRN file, select how many copies, make sure you have printable media in the first input bin, and press Start

## **Going from 2 printers to 1 printer:**

If you need to disconnect a printer, make sure its control and USB cables are disconnected. The remaining printer needs to have its control cable plugged into the **Printer #1 Port** of the Autoloader. Run the application, and if it shows Printer 2 in the bottom right corner, you will have to run the Setup.

## **Running Setup from the Application:**

If, for any reason, Setup has to be run again, left click on the icon on the upper left Title bar in the application. Select **Setup** from the menu and click **Yes**

## ***Uninstall***

To Uninstall SpeedyPrint, Click Start->All Programs->SpeedyPrint->Uninstall